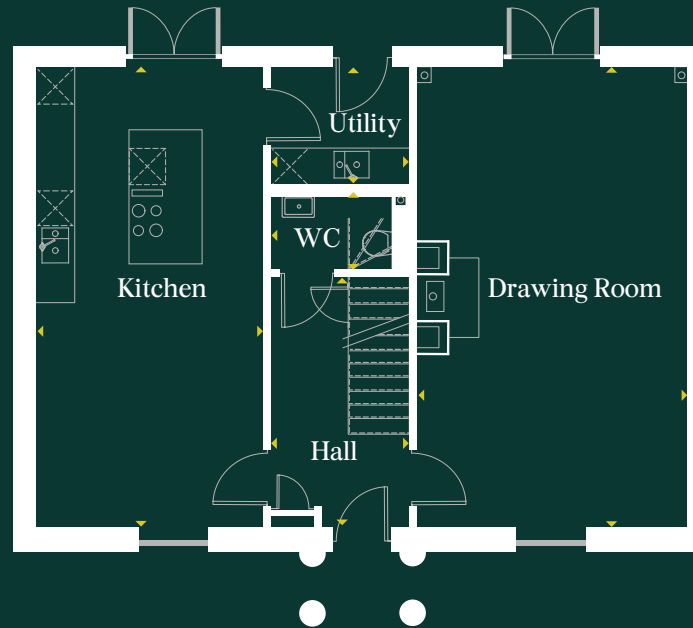


Stapleton

5/6 bedroom detached villa

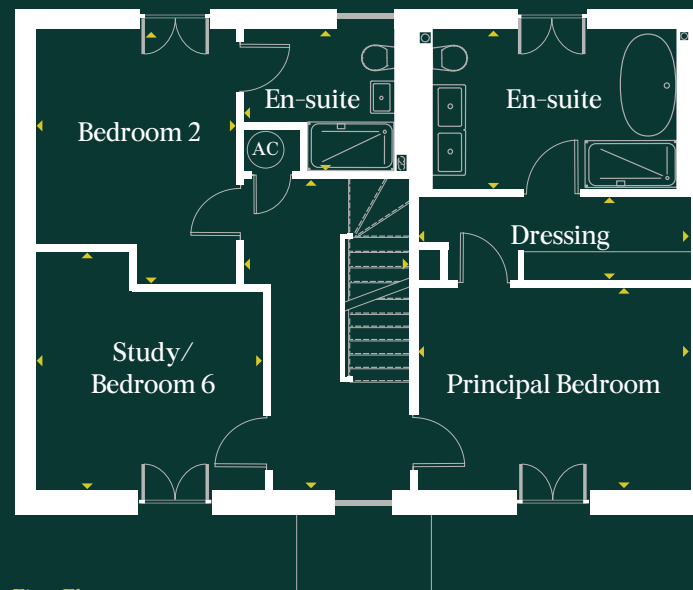
A spacious double-fronted villa including three en-suite bedrooms. The central entrance hall leads to a drawing room with traditional fireplace on one side and open-plan kitchen/dining room on the other.

PLOT: 69

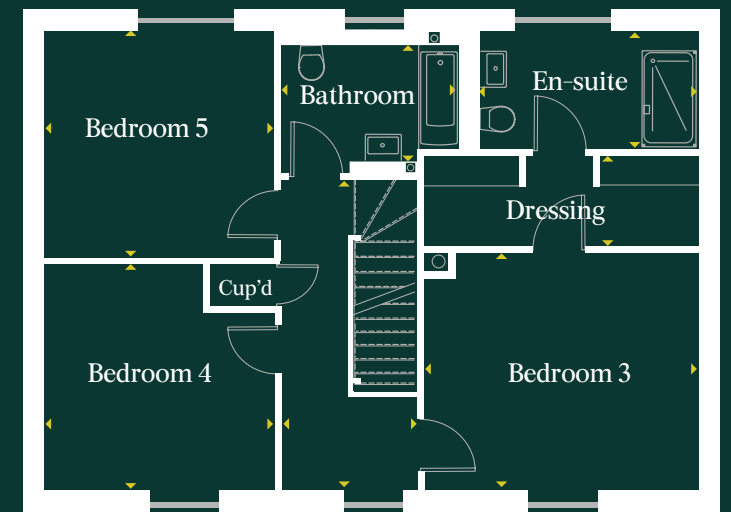


Ground Floor

House area:	241m ² / 2,591ft ²
Kitchen/Dining:	7.50 x 3.73m / 24'7" x 12'3"
Drawing Room:	7.50 x 4.48m / 24'7" x 14'8"
WC:	2.22 x 1.37m / 7'3" x 4'6"
Utility:	2.22 x 1.88m / 7'3" x 6'2"
Principal Bedroom:	4.49 x 3.28m / 14'9" x 10'9"
En-suite:	4.49 x 2.59m / 14'9" x 8'6"
Dressing:	4.49 x 2.59m / 14'9" x 8'6"
Bedroom 2:	4.49 x 3.88m / 14'9" x 12'9"
En-suite:	2.73 x 2.30m / 8'11" x 7'7"
Study/Bedroom 6:	3.73 x 3.22m / 12'3" x 10'7"
Bedroom 3:	3.50 x 3.23m / 11'6" x 10'7"
En-suite:	3.73 x 1.89m / 12'3" x 6'2"
Bedroom 4:	3.73 x 3.69m / 12'3" x 12'1"
Bedroom 5:	3.73 x 3.68m / 12'3" x 12'1"
Bathroom:	2.99 x 2.30m / 9'9" x 7'7"



First Floor



Second Floor