

HUXLEY

4 bedroom end of terrace

A unique property in the development. Spacious ground floor living areas are complemented by four bedrooms above.



PLOT: 45

House area: 216m² / 2,330ft²

Kitchen/Dining/Living: 5.9 x 6.4m / 19'3" x 21'

Hall: 4.9 x 2.3m / 16' x 7'5"

Utility: 1.9 x 1.8m / 6'2" x 5'9"

WC: 1.9 x 2.2m / 6'2" x 7'2"

Study: 4 x 2.9m / 13' x 9'5"

Drawing Room: 4.8 x 6.4m / 15'7" x 20'9"

Cupboard: 1.9 x 1m / 6'2" x 3'3"

WC: 1.4 x 1.9m / 4'6" x 6'2"

Master Bedroom: 3.3 x 4.1m / 10'8" x 13'4"

En-suite: 2.5 x 2.2m / 8'2" x 7'2"

Dressing: 1.8 x 2.3m / 5'9" x 7'5"

Bedroom 2: 3.7 x 3.9m / 12' x 12'8"

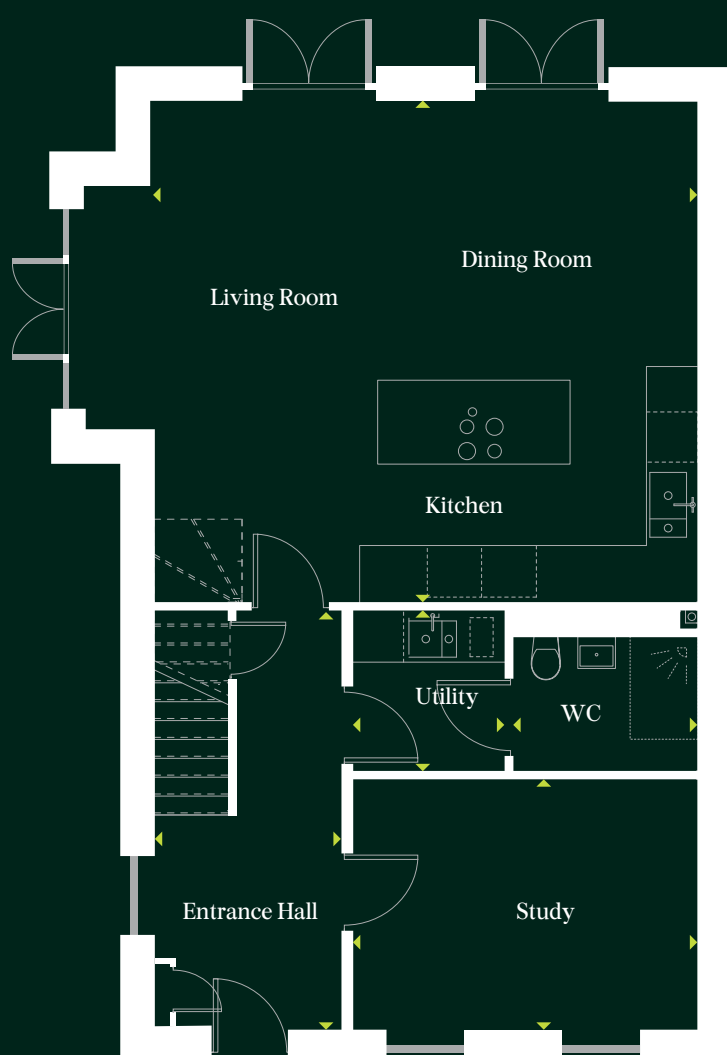
En-suite: 2.1 x 2.2m / 6'8" x 7'2"

Bedroom 3: 5 x 3.1m / 16'4" x 10'

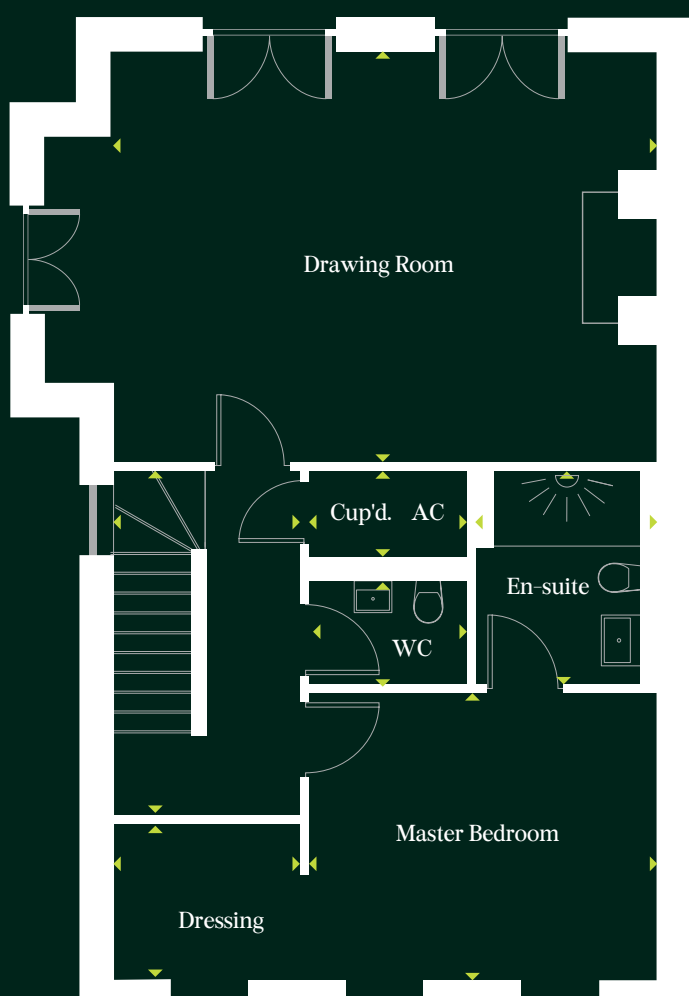
Bedroom 4: 3.9 x 3.2m / 12'8" x 10'5"

Bathroom: 1.9 x 3.2m / 6'2" x 10'5"

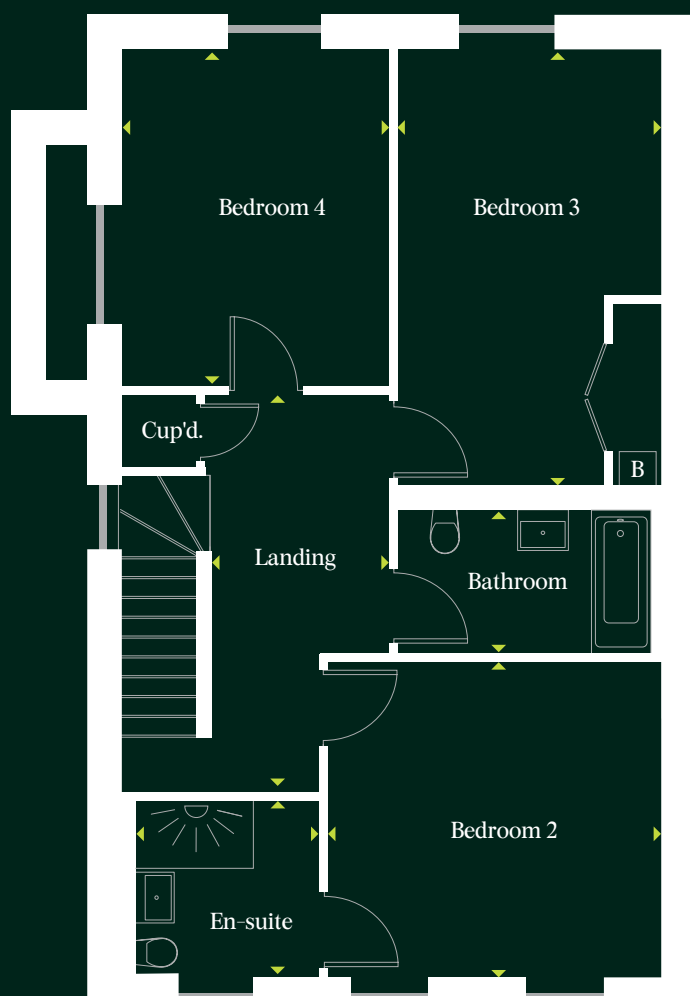
Landing: 4.7 x 3.3m / 15'4" x 10'8"



Ground Floor



First Floor



Second Floor

For more information, contact the Marketing Pavilion:
sales@holburnepark.co.uk | Tel: 01225 302 888 | www.holburnepark.co.uk

