

# HOLDEN

## 4 bedroom end of terrace

Generous family home offering four beautifully designed bedrooms over three storeys. Spacious ground floor living areas are complemented by four bedrooms above.



PLOT: 59, 87

House area: 186m<sup>2</sup> / 2,007ft<sup>2</sup>

Kitchen/Breakfast: 5.67 x 4.33m / 18'3" x 14'1"

Dining room: 5.26 x 4.25m / 18'3" x 14'0"

WC: 1.82 x 0.87m / 6'0" x 2'10"

Master Bedroom: 3.9 x 4.25m / 14'0" x 12'5"

En-suite: 1.7 x 4.25m / 14'0" x 5'5"

Drawing Room: 5.67 x 4.33m / 18'3" x 14'1"

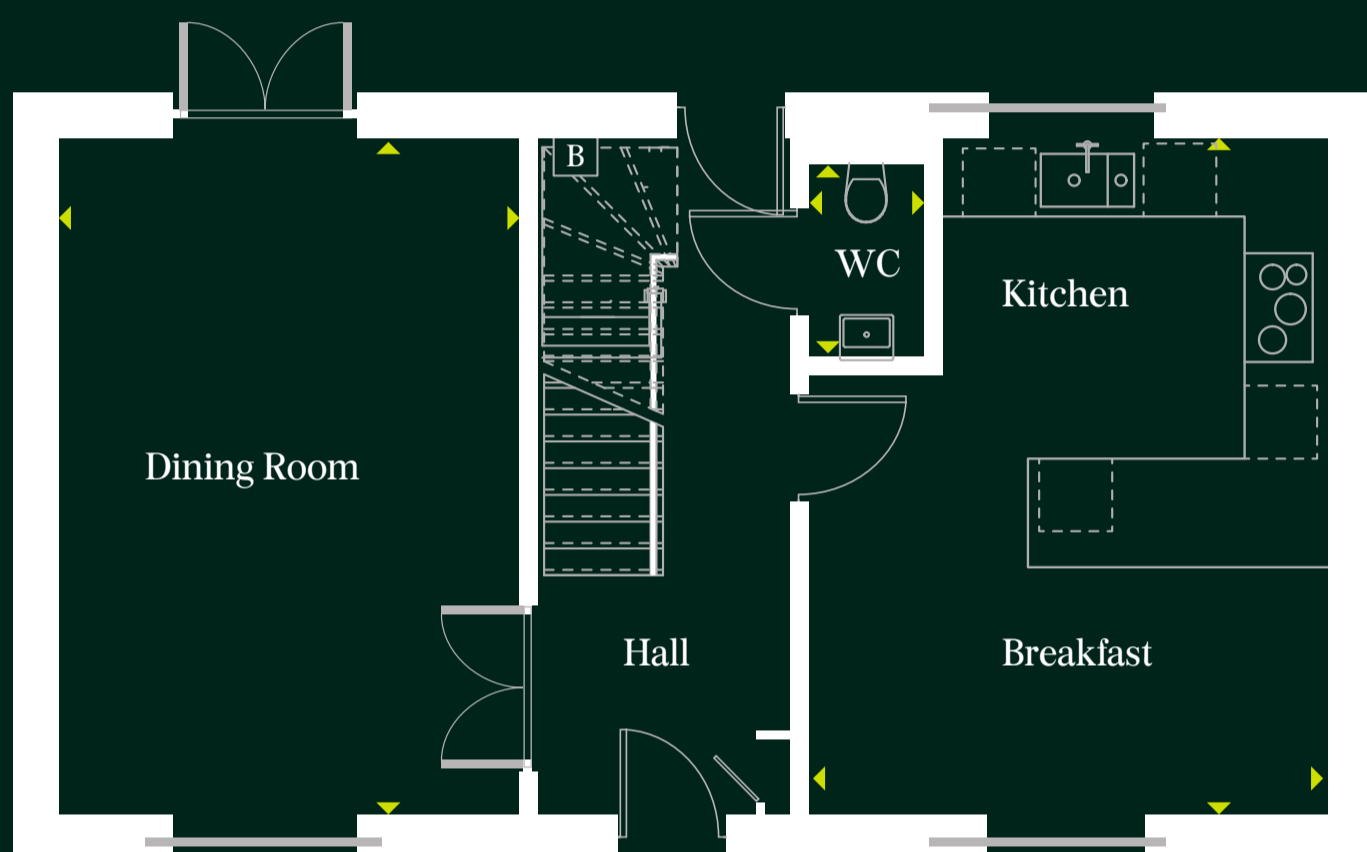
Bedroom 2: 2.8 x 4.34m / 14'1" x 8'10"

En-suite: 3.03 x 1.48m / 9'11" x 4'10"

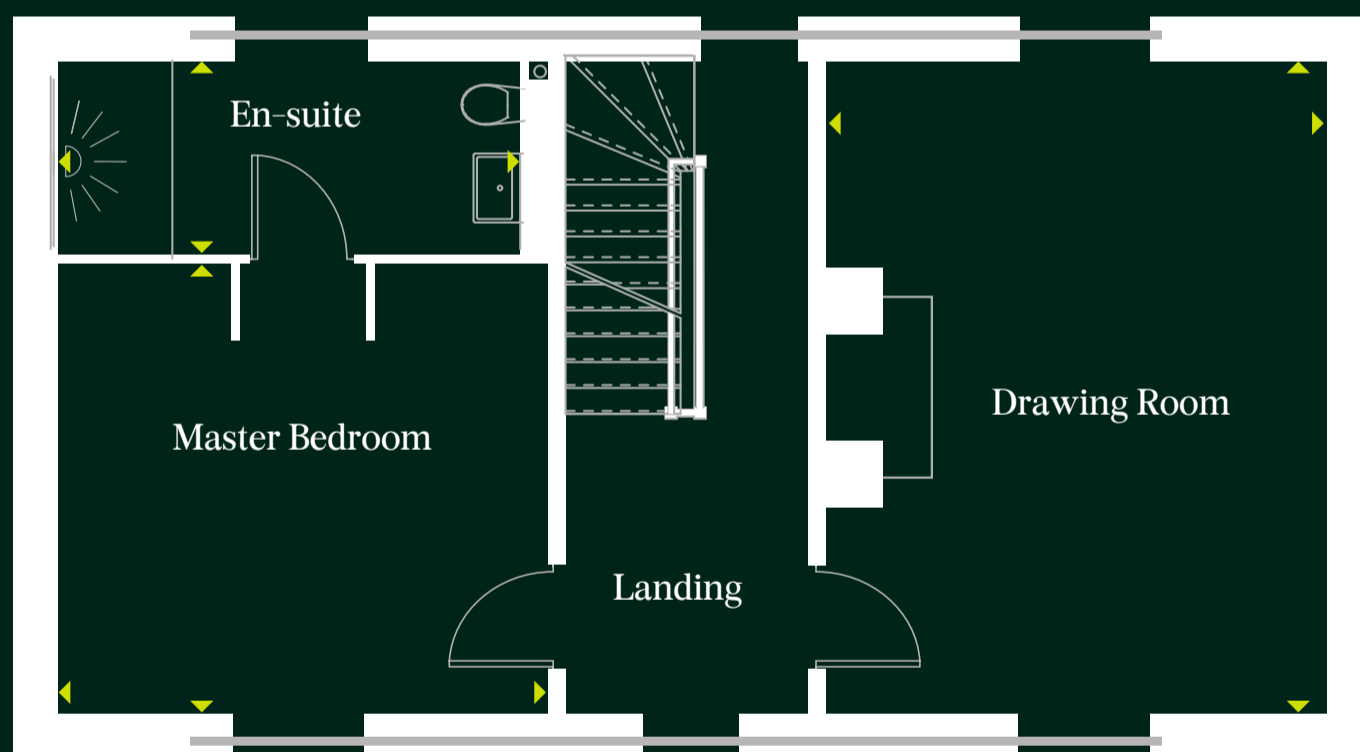
Bedroom 3: 4.27 x 2.81m / 14'0" x 9'3"

Bedroom 4: 2 x 4.1m / 14'1" x 6'7"

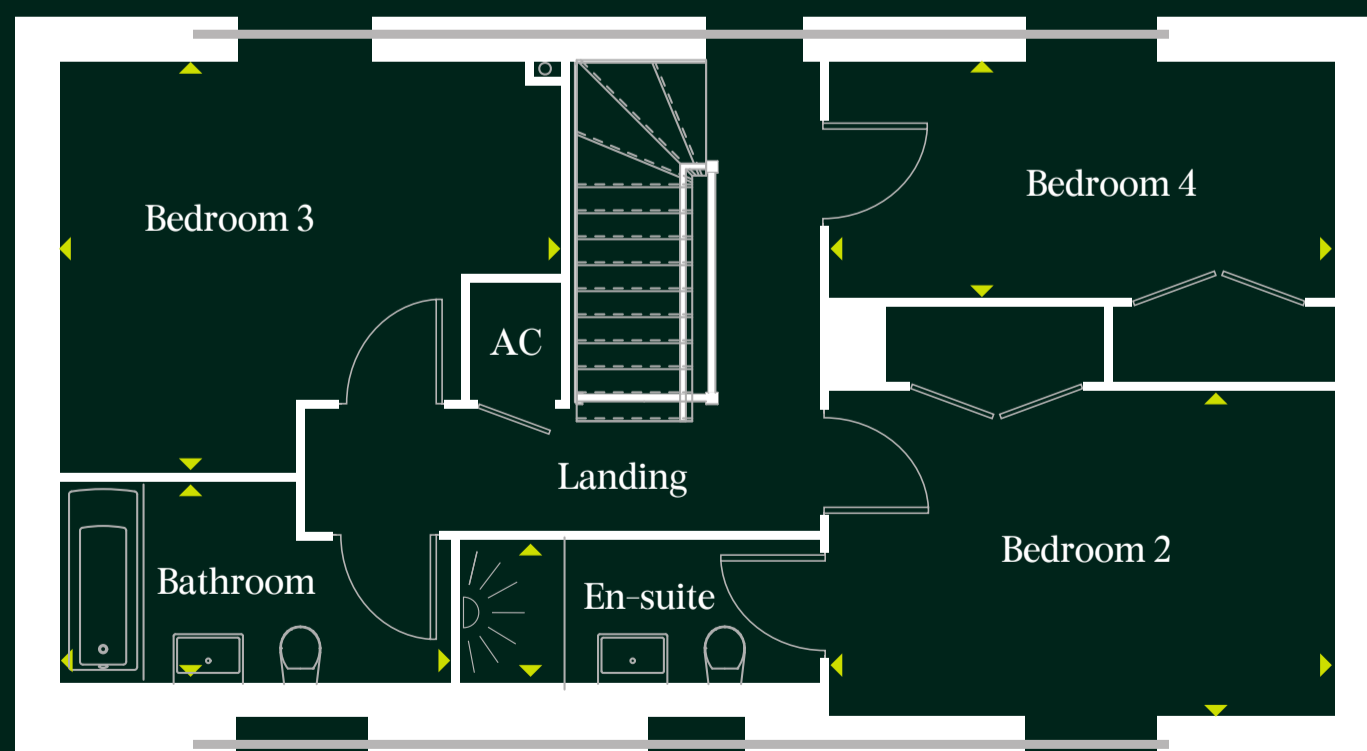
Bathroom: 2 x 3.38m / 10'11" x 6'6"



### Ground Floor



### First Floor



### Second Floor

For more information, contact the Marketing Pavilion:  
sales@holburnepark.co.uk | Tel: 01225 302 888 | www.holburnepark.co.uk

